

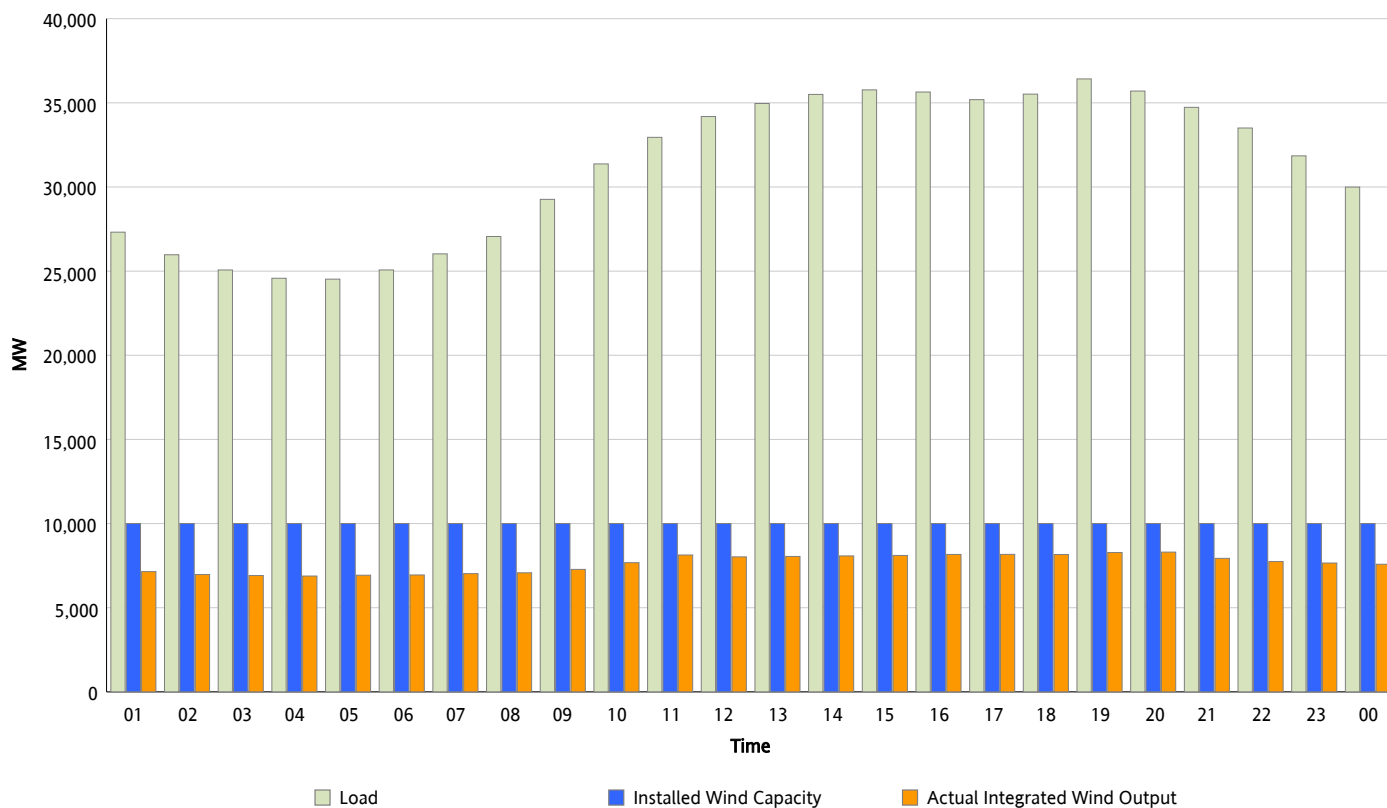


ERCOT Grid Operations

Wind Integration Report : 11/10/2012

Peak Load	36,423 MW
Load Peak Hour (HE)	19
Wind Over Peak	8,279 MW
Wind Record 11/10/12	8,521 MW
Max Wind Value*	8,521 MW
Wind Peak Time	10:21
Wind Integration %	25.9 %

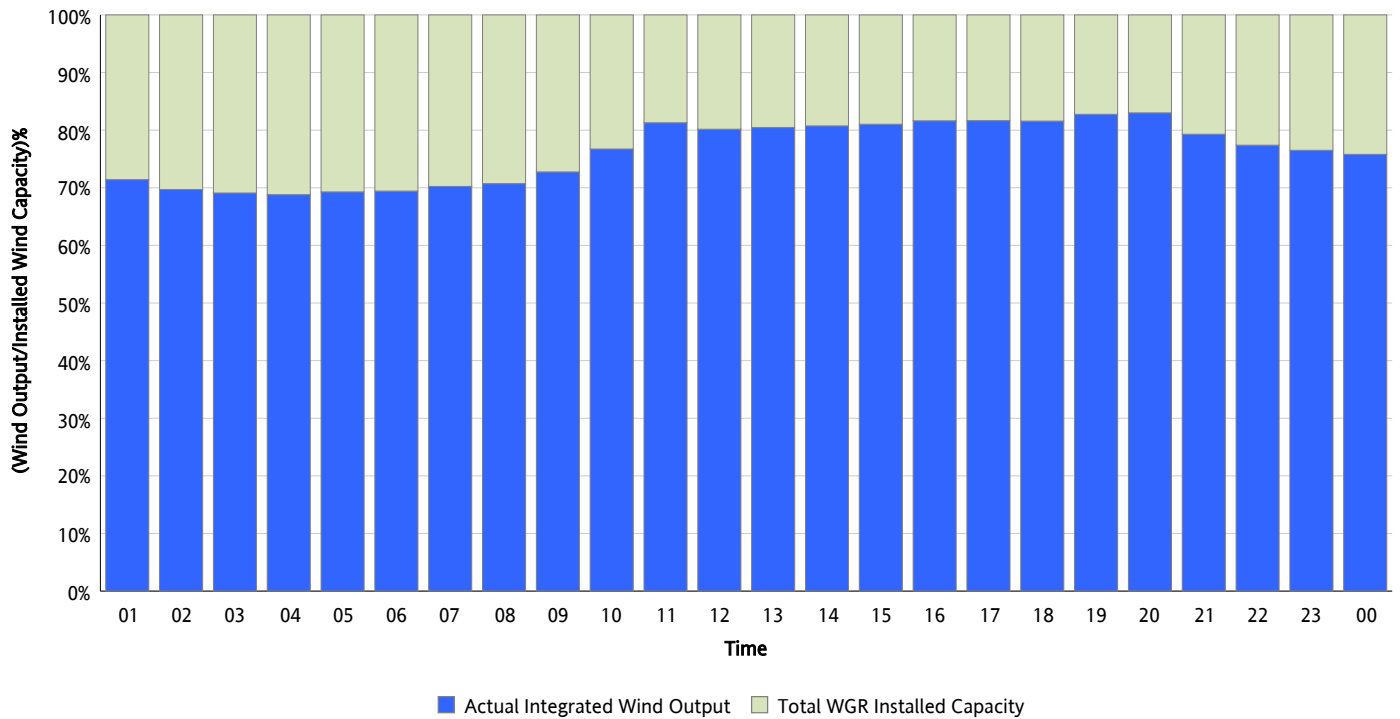
Hourly Average Actual Load vs. Actual Wind Output
11/10/2012



* Wind Record and Wind Max represent instantaneous values and the rest of the values are integrated over the hour

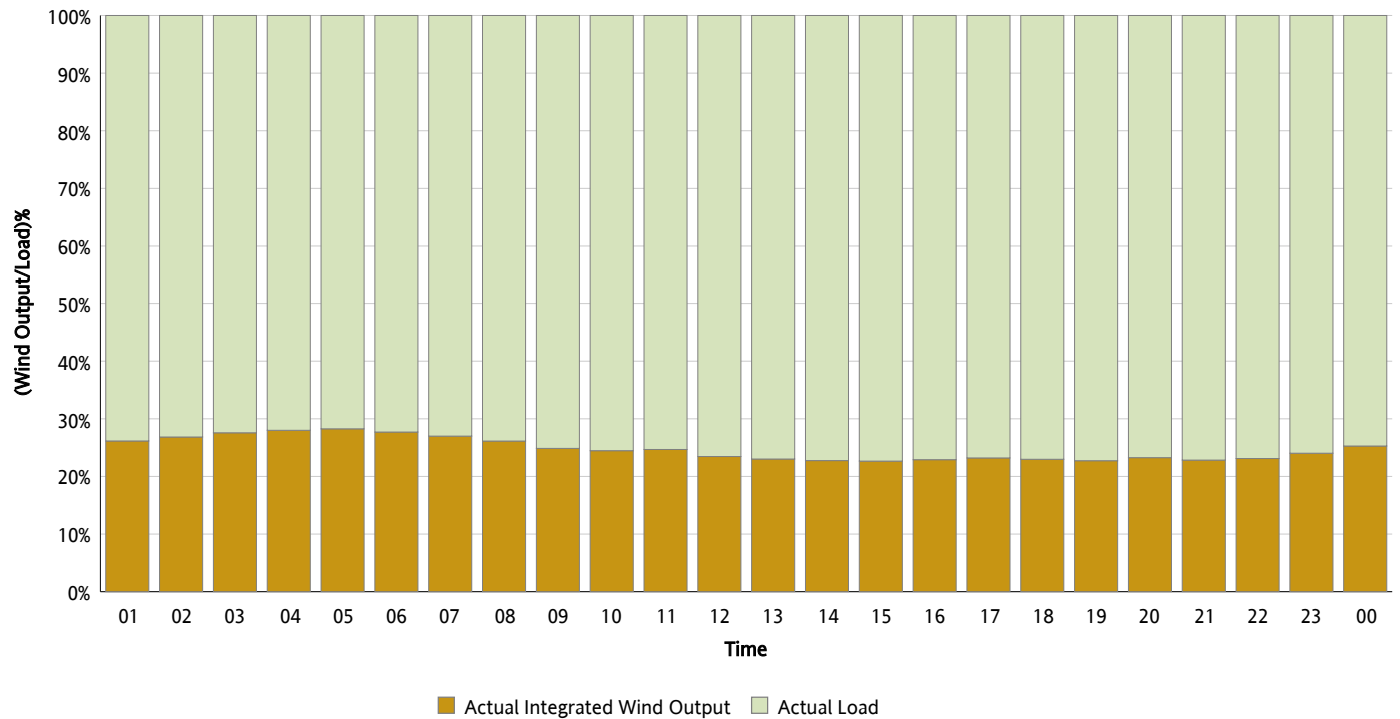
Actual Wind Output as a Percentage of the Total Installed Wind Capacity

11/10/2012



Actual Wind Output as a Percentage of the ERCOT Load

11/10/2012



ERCOT Load vs. Actual Wind Output

11/03/2012 - 11/10/2012

